



WORLD'S BEST
ALLOY BULLBARS

East Coast Bullbars (ECB Pty Ltd)

Tel: 07 3897 5700

Fax: 07 3283 1168

ecb@ecb.com.au www.ecb.com.au

29 Snook St
Clontarf QLD 4019
Australia

Po Box 122
Margate QLD 4019
Australia

BT127SY

REPLACES: 00.00.00

REVISED: 17.01.18

FITTING INSTRUCTIONS

TOYOTA HILUX 09/11on 2WD & 4WD BIG TUBE™ BAR WITH FOG LIGHTS VEHICLE FRONTAL PROTECTION SYSTEM (VFPS) FOR AIR BAG & ADR COMPLIANT VEHICLES

Check installation hardware before commencing.

1. Lift bonnet
2. Remove grille, two plastic clips and two PK self-tappers along top, pull grille forward at top enough to access and release five fixed clips along bottom inside of grille.
3. Remove bumper cover, three plastic clips along top (grille area), one plastic clip (each side) at bumper cover top side returns, four 10mm head self-tapper on inner guard (each side), three plastic clips along bottom of bumper cover. Pull bumper cover outward at sides to release off clips.
4. Remove steel chassis cross member from front of chassis, four 14mm nuts. **See figure 1.**
On 4WD models: Remove two plastic clips from plastic under body guard (each side).
5. **On 4WD models** trim plastic air deflectors at top of cross member. **See figure 2.**
6. Remove four bumper cover support brackets from vehicle. **See figure 3.**
7. Remove headlight / indicator assemblies from vehicle. Three 10mm head self-tappers and one 10mm head bolt. Disconnect wiring as removing. **See figure 4.**
8. Remove plastic bumper cover support brackets from bottom of headlights. Two PK screws(per light) **See figure 5**
9. Remove plastic bumper cover side supports from each guard. One 10mm head self-tapper. **See figure 6**
10. Connect ECB Quick Click Indi / Park kit (supplied) to original wiring loom. Refit headlight / indicator assemblies connecting to the other side of the ECB wiring harness. Run ECB wiring harness out from under headlight ensuring it is clear of all sharp edges and pinch points.
11. Connect ECB Quick Click fog wiring kit (supplied) to original wiring loom. Should vehicle not have original equipment fog lights, an aftermarket wiring harness will be required – ECB Part number ASLWIRING.
12. Fit ECB steel mounting brackets (supplied) to outside of chassis. **NOTE:** Welded spacer plate to inside. Use M12 x 35 x 1.25 bolts, flat and spring washers (supplied) and M8 x 30 x 1.25 bolts, flat and spring washers (supplied) into captive nuts in chassis. **FINGER TIGHTEN ONLY. See figure 7.**
13. Place 3/8 flat washer (supplied) and 75x50x8 steel plate (supplied) over 3/8 x 4 bolt (supplied). Slide 52mm long steel chassis spacer pipe (supplied) over bolt. **See figure 8.** Slide through chassis and steel mounting bracket. Use 3/8 flat washer, spring washer and nut (supplied). **FINGER TIGHTEN ONLY.**
14. Fit ECB chassis cross member (supplied) to original studs on chassis. Use original nuts. **FINGER TIGHTEN ONLY.** Use 3/8 x 1 1/2 bolts, nuts and flat and spring washers (supplied) to attach ECB cross member to steel mounting brackets. **FINGER TIGHTEN ONLY. See figures 9 and 10.**



**WORLD'S BEST
ALLOY BULLBARS**

East Coast Bullbars (ECB Pty Ltd)

Tel: 07 3897 5700

Fax: 07 3283 1168

ecb@ecb.com.au www.ecb.com.au

29 Snook St
Clontarf QLD 4019
Australia

Po Box 122
Margate QLD 4019
Australia

15. Tighten M12 x 35 x 1.25 bolts firm only and level steel mounting brackets off front edge. **See figure 11. TIGHTEN ALL BOLTS / NUTS** (as per the below sequence) ensuring steel mounting brackets remain centralised with vehicle and are correct distance apart for alloy protection bar to mount on outside of steel mounting brackets.
 - a) Mount bolt tighten sequence:
 - b) **TIGHTEN** M12 x 35 bolts first.
 - c) Centralize cross member and **TIGHTEN** original 14mm nuts on cross member studs.
 - d) **TIGHTEN** 3/8 x 4 bolt/nut **FIRM ONLY** – 75x 50 steel plate in vertical position.
 - e) Align steel mounting brackets level at sides and with enough distance apart for protection bar to mount on outside of steel mounting brackets. **See figure 12. TIP:** Tighten 3/8 x 1½ bolt/nut **FIRM ONLY** then tap mounts into position.
 - f) **TIGHTEN** 3/8 x 1 ½ bolts and nuts from ECB cross member to steel mounting brackets.
 - g) **TIGHTEN** 3/8 x 4 bolts/nuts. Ensure 75x50 steel plate is in vertical position.
 - h) **TIGHTEN** M8 x 30 bolts.
16. Fit ECB LED indicator / park lights (supplied) into protection bar as per instructions supplied with the LED indicator kit. **NOTE: Ensure park light is to outside. See figure 13.**
17. Attach ECB fog lights to protection bar. Place M6 x 20 bolts, spring washers (supplied) through light mount from inside and attach nut to top. Slide assembly into light mount in Protection bar and centralize light to hole. **TIGHTEN FIRM ONLY.** Fit ECB fog light trims (supplied) to protection bar. **NOTE:** Wider part of trim faces to centre. **See figure 14.**
18. Attach ECB infill trims (supplied) to protection bar. Use M6 nyloc nuts and flat washers (supplied) **FINGER TIGHTEN ONLY. See figure 15.**
19. Attach ECB 6mm clip lock trim (supplied) to centre section of protection bar between ECB infill trims. **See figure 16.**
20. Fit ECB protection bar to outside of steel mounting brackets. Use ½ x 1 ¾ bolts, nuts, flat and spring washers (supplied). **FINGER TIGHTEN ONLY.**
21. Align ECB protection bar with vehicle ensuring a gap of 10 to 12mm between protection bar and guard / flare at sides. **See figure 17** for side view and **figure 18** for front view **TIGHTEN ALL BOLTS.** Impact wrench access is from grille area. **NOTE:** A 10mm to 12mm gap each side is critical to allow for body/chassis twist in rough terrain.
22. Connect indicator / park light wiring and fog light wiring **CHECK OPERATION.**
23. Carefully drill three 3/16 holes in lower lip on grille, one in centre and one each side, refit grille to vehicle. Zip tie bottom of grille to head light / indicator assemblies and to steel bracket in centre. **See figures 19 and 20.**
24. Align ECB infill trims with vehicle and protection bar. **TIGHTEN NUTS FIRM ONLY – DO NOT OVERTIGHTEN.**
25. Fit ECB inner guard bracket (supplied) to lower radiator support using one 10mm head bolt from lower bumper mounts to radiator support and one M6x20 bolt, washer and nyloc nut (supplied) per side. **See figure 21.** Secure outer hole in liner to inner guard bracket with bolt supplied M6 x 20 bolt, washers and nyloc nuts (supplied). Then secure second hole in inner guard bracket to liner with M6 x 20 bolt, washer and nyloc nut (supplied), ensure this is not pulled to tight as it may cause liner to tear. **TIGHTEN** bolts and trim any excess liner off. On passenger side ensure washer bottle stays covered after trim. **See figure 22.**



**WORLD'S BEST
ALLOY BULLBARS**

East Coast Bullbars (ECB Pty Ltd)

Tel: 07 3897 5700

Fax: 07 3283 1168

ecb@ecb.com.au www.ecb.com.au

29 Snook St
Clontarf QLD 4019
Australia

Po Box 122
Margate QLD 4019
Australia

ENSURE NUMBER PLATE IS CLEARLY VISABLE

Note: When fitting/refitting the licence plate to the vehicle, ensure there is no obstruction to licence plate vision in accordance with local authorities. If required relocate licence plate to an alternate location.

Further VFPS Notes:

- Do not attach VFPS to the vehicle using anchorages not intended for this purpose (e.g. engine mounting bolts).
- Do not use this product for any vehicle make or model, other than those specified by the VFPS manufacturer.
- Do not remove the plaque or label from the VFPS.
- Do not modify the structure of the VFPS in any way.
- No accessory or fitment should project forward of the VFPS forward profile.
- ENSURE THESE INSTRUCTIONS ARE LEFT WITH VEHICLE OWNER AND/OR OPERATOR.**

IMPORTANT INFORMATION

Periodically check bolts and nuts for correct tightness, especially if travelling on rough roads

FITTING KIT

1 – Pair steel mounting brackets	8 – ½ spring washers
1 – Steel cross member	6 – ½ nuts
2 – Steel inner guard brackets	8 – M6 x 20 bolts
2 – 75 x 50 x 8 steel plates with 10mm hole	20 – M6 flat washers
2 – 10nb tube spacer, 52mm long	12 – M6 nyloc nuts
2 – M12 x 35 x 1.25 bolts	2 – M6 nuts and spring washers
2 – M8 x 30 x 1.25 bolts	1 – Pair Hilux infills (IC11LUXINFL)
2 – M8 flat washers	1 – ECB indicator park light kit
2 – M8 spring washers	1 – ECB fog light kit
2 – 3/8 x 4 bolts	2 – ECB fog light surrounds
2 – 3/8 x 1 ½ bolts	1 – Pair ECB Quick Click Indi / Park kit (IC11HILLED100H)
8 – 3/8 flat washers	1 – Pair ECB Quick Click fog kit (IC07LC791004ECBH)
4 – 3/8 spring washers	1 – 1100mm length, 6mm clip lock trim
4 – 3/8 nuts	3 – 150mm zip ties
6 – ½ x 1 ¾ bolts	
14 – ½ flat washers	

Remove cross member

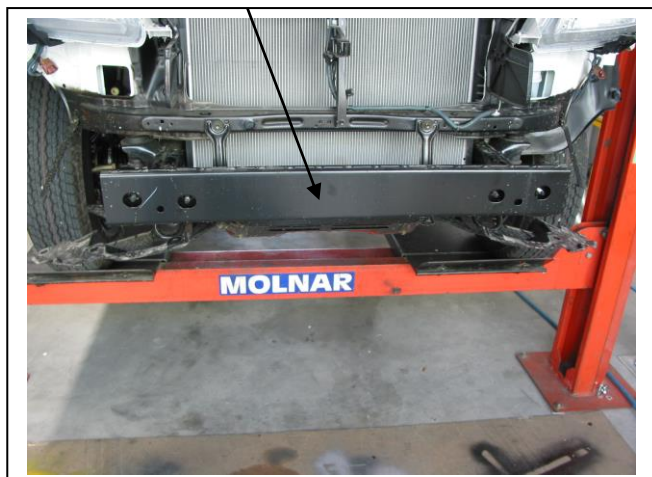


Figure 1



Figure 2: Trim lower section from air dam.
Passenger's side shown



**WORLD'S BEST
ALLOY BULLBARS**

East Coast Bullbars (ECB Pty Ltd)

Tel: 07 3897 5700

Fax: 07 3283 1168

ecb@ecb.com.au www.ecb.com.au

29 Snook St
Clontarf QLD 4019
Australia

Po Box 122
Margate QLD 4019
Australia

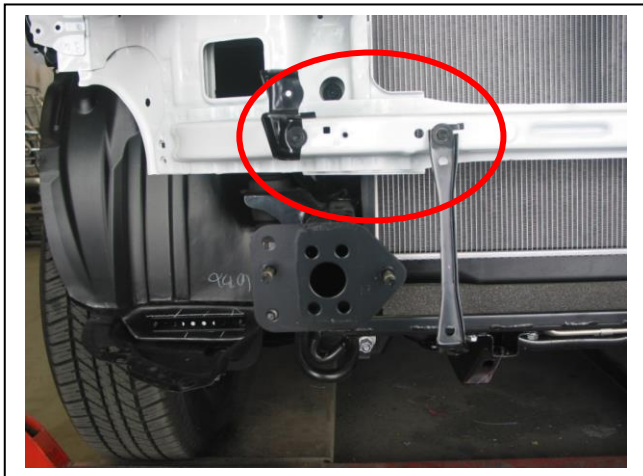


Figure 3 – Drivers side shown



Figure 4 – Remove headlight

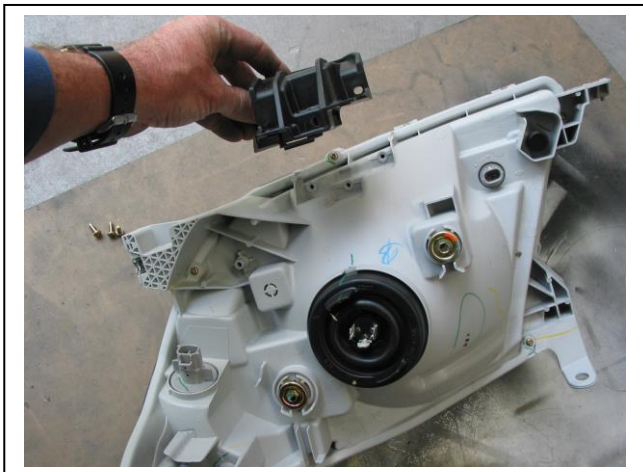


Figure 5 – Removing trim from lower headlights



Figure 6 - Remove plastic bumper support from under guard.

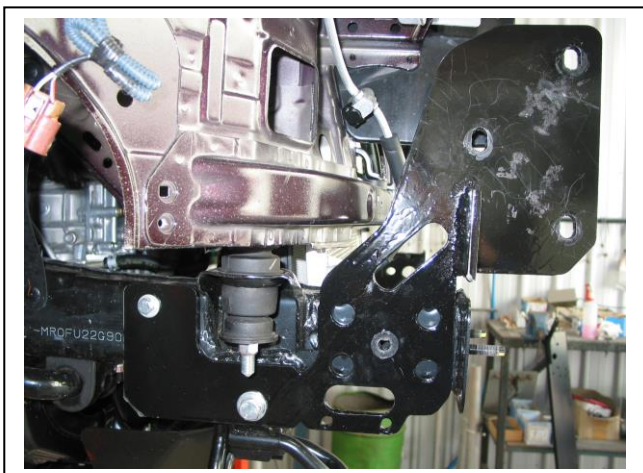


Figure 5



Figure 6 – Washer straight to vehicle



**WORLD'S BEST
ALLOY BULLBARS**

East Coast Bullbars (ECB Pty Ltd)

Tel: 07 3897 5700

Fax: 07 3283 1168

ecb@ecb.com.au www.ecb.com.au

29 Snook St
Clontarf QLD 4019
Australia

Po Box 122
Margate QLD 4019
Australia

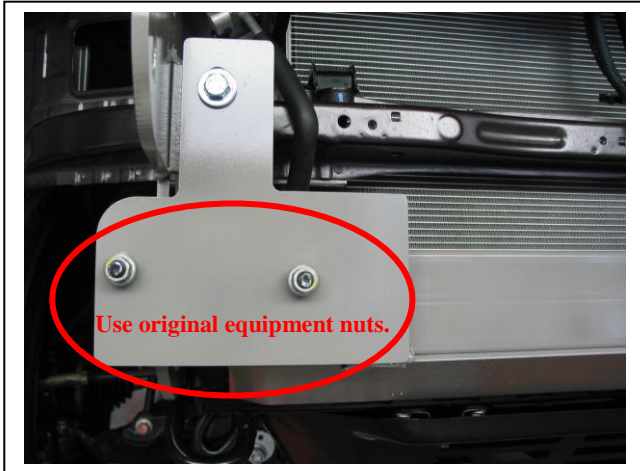


Figure 7



Figure 8 – ECB steel mounting brackets fitted



Figure 9 - Passenger side shown
Levelling off front edge

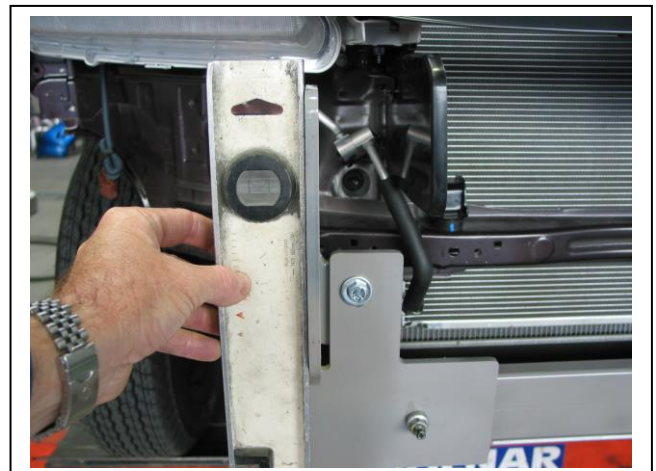
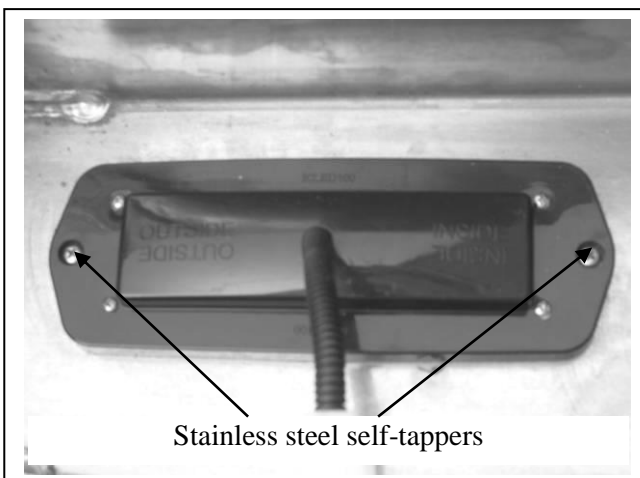
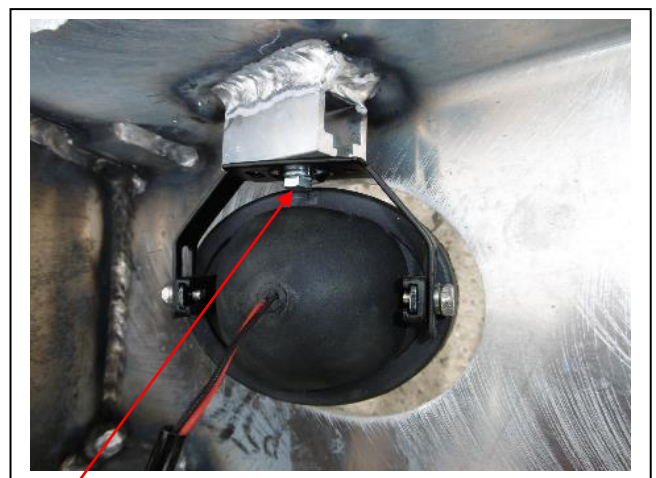


Figure 10 - Drivers side shown
Levelling at sides



Stainless steel self-tappers

Figure 11



M6 bolt

Figure 12



**WORLD'S BEST
ALLOY BULLBARS**

East Coast Bullbars (ECB Pty Ltd)

Tel: 07 3897 5700

Fax: 07 3283 1168

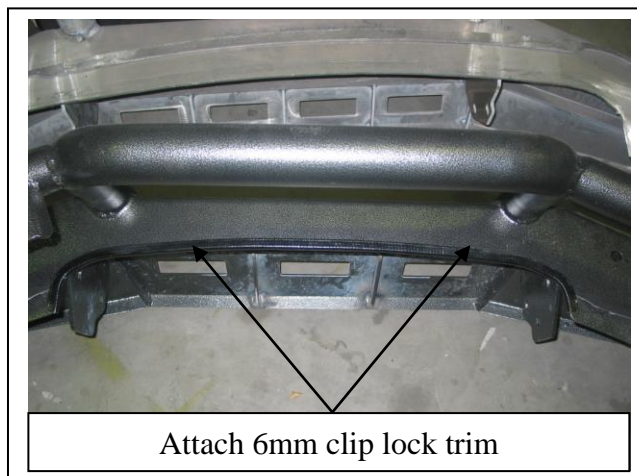
ecb@ecb.com.au www.ecb.com.au

29 Snook St
Clontarf QLD 4019
Australia

Po Box 122
Margate QLD 4019
Australia



Figure 13 - Finger tighten only at this time



Attach 6mm clip lock trim

Figure 14



Figure 15



Figure 16

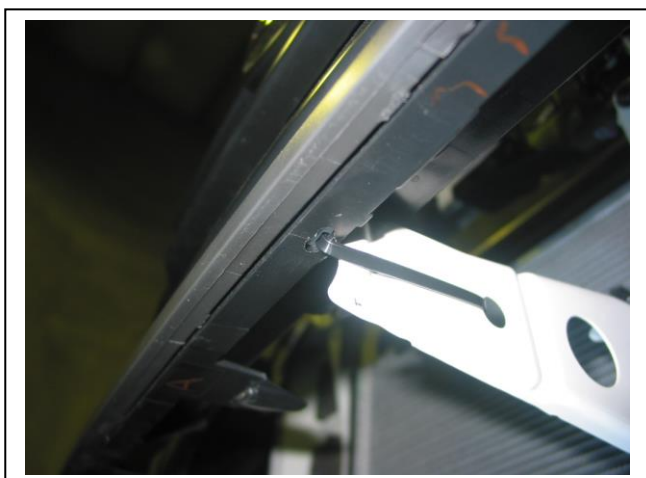


Figure 17 – Centre grille attach point

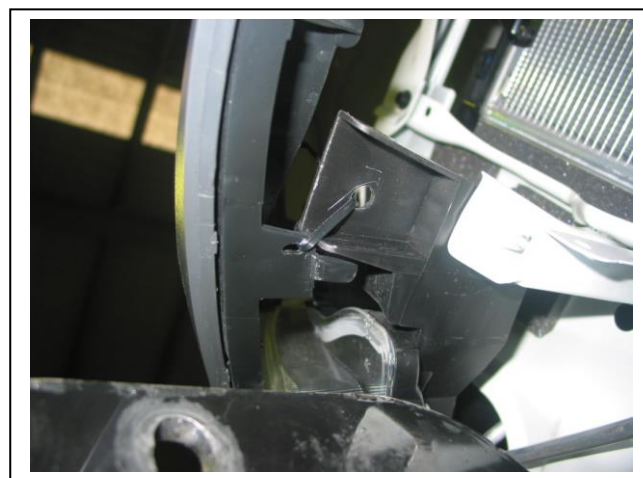


Figure 18 – Side grille attachment point. Drivers side shown.



**WORLD'S BEST
ALLOY BULLBARS**

East Coast Bullbars (ECB Pty Ltd)

Tel: 07 3897 5700

Fax: 07 3283 1168

ecb@ecb.com.au www.ecb.com.au

29 Snook St
Clontarf QLD 4019
Australia

Po Box 122
Margate QLD 4019
Australia



Figure 19 –Drivers side shown



Figure 20 –Passengers side shown



**WORLD'S BEST
ALLOY BULLBARS**

East Coast Bullbars (ECB Pty Ltd)

Tel: 07 3897 5700

Fax: 07 3283 1168

ecb@ecb.com.au www.ecb.com.au

29 Snook St
Clontarf QLD 4019
Australia

Po Box 122
Margate QLD 4019
Australia



**WORLD'S BEST
ALLOY BULLBARS**

East Coast Bullbars (ECB Pty Ltd)

Tel: 07 3897 5700

Fax: 07 3283 1168

ecb@ecb.com.au www.ecb.com.au

29 Snook St
Clontarf QLD 4019
Australia

Po Box 122
Margate QLD 4019
Australia

We value your comments

Dear Fitter,

ECB would like to know how you went with the installation of this product. We value your comment and may need to contact you to clarify some details so please complete your contact details clearly.

We would appreciate if you could complete as many of the following details as possible.

Your Name:	Your contact No.
Product Part No.	Product Invoice No.
Product Description:	Make, model, and year of vehicle:
Product Work Order No.	Company your from/Company product purchased from:

Date of Fitment: ____/____/____

Was the fitting hardware supplied complete?

Yes

☐

No

☐

If no what was not supplied

Did the installation go well?

Yes

☐

No

☐

Please provide comments

Please draw diagrams if you need to.

Post to

Reply Paid 122

PO Box 122

Margate QLD 4019

Fax to

(07) 3283 1168



**WORLD'S BEST
ALLOY BULLBARS**

East Coast Bullbars (ECB Pty Ltd)

Tel: 07 3897 5700

Fax: 07 3283 1168

ecb@ecb.com.au www.ecb.com.au

29 Snook St
Clontarf QLD 4019
Australia

Po Box 122
Margate QLD 4019
Australia



**WORLD'S BEST
ALLOY BULLBARS**

East Coast Bullbars (ECB Pty Ltd)

Tel: 07 3897 5700

Fax: 07 3283 1168

ecb@ecb.com.au www.ecb.com.au

29 Snook St
Clontarf QLD 4019
Australia

Po Box 122
Margate QLD 4019
Australia

DESPATCH CHECKLIST BT127SY

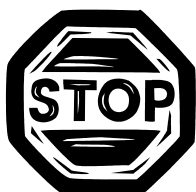
ICZBKCT127



Work Order #	
Finish:	
Transport:	
Due Date:	

- OC.....1 – Pair steel mounting brackets (pair)
- OC.....2 – Steel inner guard brackets
- OC.....1 – Steel cross brace
- BK.....2 – 75 x 50 x 8mm steel plate with 10mm hole in centre
- BK.....1 – Bolt kit
- BK.....1 – 1100mm length, 6mm clip lock trim
- BK.....1 – ECB LED Indicator / Park light kit.
- BK.....1 – Pair ECB Quick Click Indi / Park kit (IC11HILLED100H)
- BK.....1 – Pair ECB Quick Click fog wiring kit (IC11HIL1004ECBH)
- BK.....1 – Pair ECB Quick Click fog wiring kit (IC10D401004ECBH)
- BK.....1 – ECB fog light kit
- BK.....2 – ECB fog light surrounds
- OC.....1 – Pair Hilux infill trims. (IC11LUXINFL)
- OC.....2 – ECB overrides – **Fitted to bar.**
- OC.....6 – 6mm air scoops – **Fitted to bar.**

**See other side of this page
for photos of all mounts**



Is this product “the best it can be” Yes _____/_____
Wrapper's initials / Checker initials

If **NO** fix before continuing

All parts checked and completed by:

Nut and bolts: _____ Date __/__/__

Order control: _____ Date __/__/__

Final wrap check: _____ Date __/__/__



**WORLD'S BEST
ALLOY BULLBARS**

East Coast Bullbars (ECB Pty Ltd)

Tel: 07 3897 5700

Fax: 07 3283 1168

ecb@ecb.com.au www.ecb.com.au

29 Snook St
Clontarf QLD 4019
Australia

Po Box 122
Margate QLD 4019
Australia

